

Braden Risk Scale:

Low: 15-18
Moderate: 13-14
High: 10-12
Very High: < 9

Bed Selection Algorithm

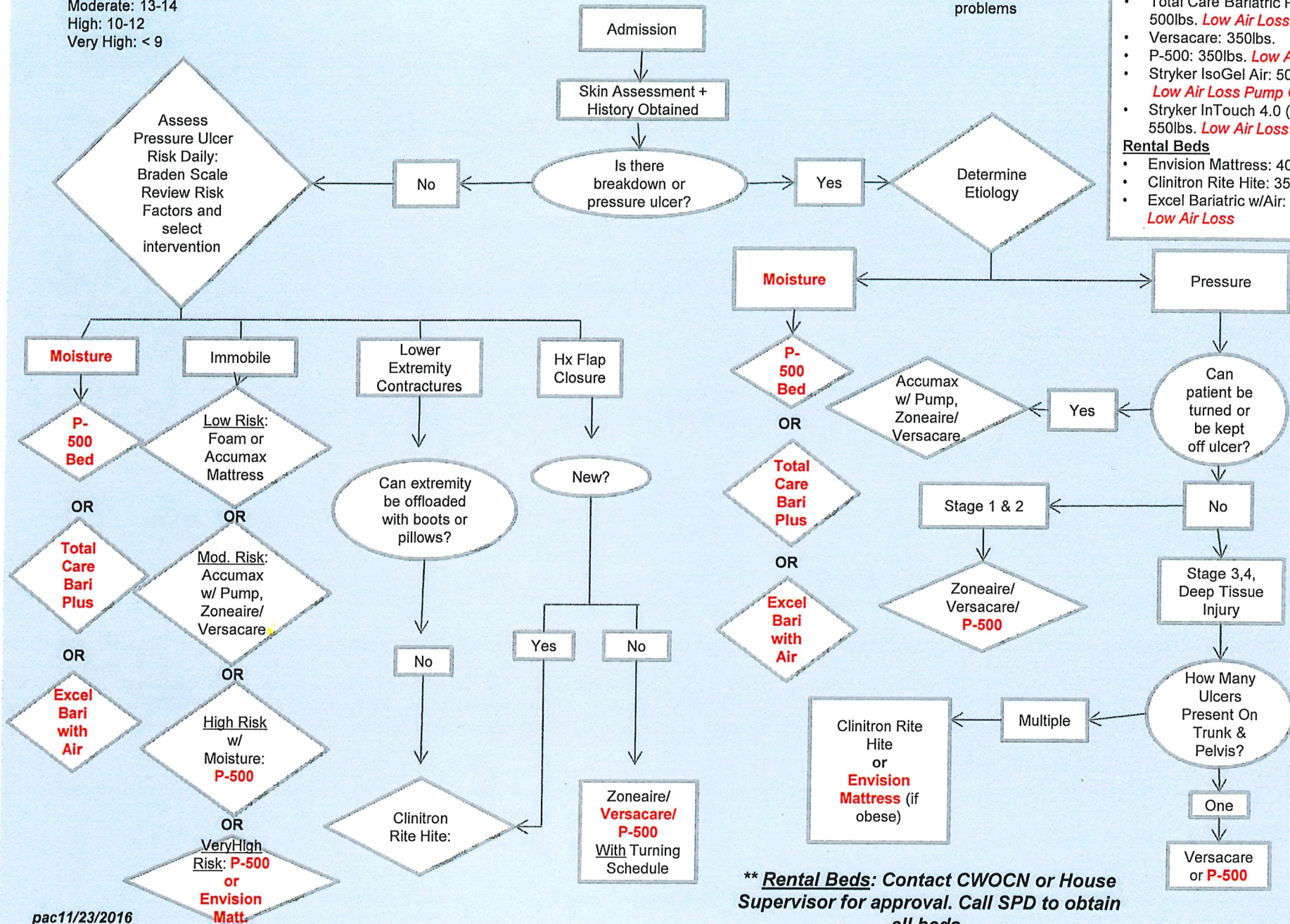
Use "Low Air Loss Therapy" for patients with moisture problems

Weight Capacities

- Foam Mattress: 300lbs.
- ZoneAire: 300lbs.
- Total Care Bariatric Plus: 500lbs. **Low Air Loss**
- Versacare: 350lbs.
- P-500: 350lbs. **Low Air Loss**
- Stryker IsoGel Air: 500lbs. **Low Air Loss Pump Option.**
- Stryker InTouch 4.0 (ICU): 550lbs. **Low Air Loss**

Rental Beds

- Envision Mattress: 400lbs
- Clinitron Rite Hite: 350lbs.
- Excel Bariatric w/Air: 1000lbs. **Low Air Loss**



**** Rental Beds: Contact CWOCN or House Supervisor for approval. Call SPD to obtain all beds.**