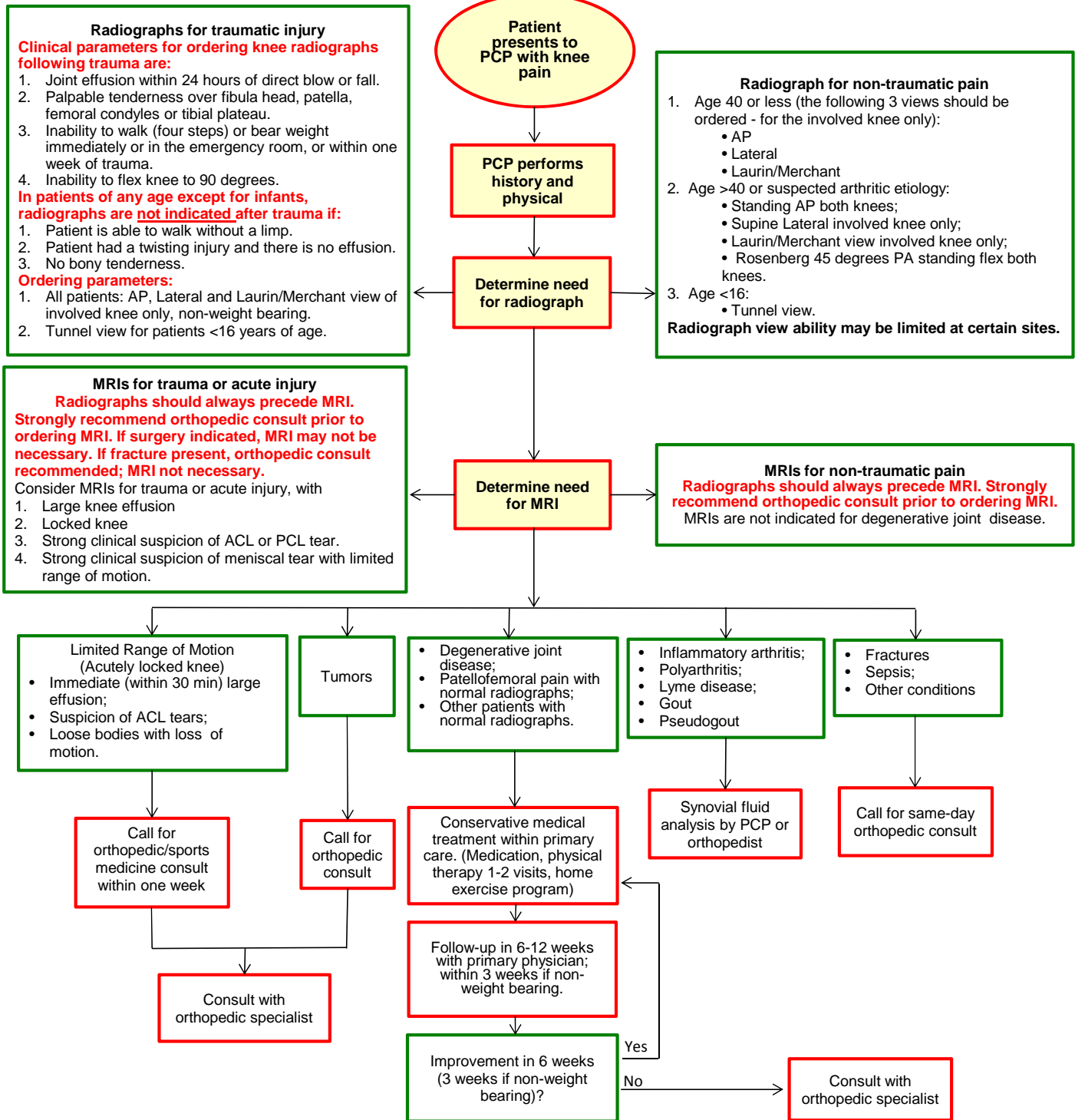


Traumatic or acute injury decision tree

Non-traumatic pain decision tree



Used with permission of UW Medical Foundation, UW Hospitals and Clinics, Meriter Hospital, University of Wisconsin Department of Family Medicine, Unity Health Insurance, Physicians Plus Insurance Corporation, and Group Health Cooperative. Individual patient considerations and advances in medical science may supersede or modify these recommendations.